

# ViewScan

Concealed Weapons Detection System

View Systems Inc.

## ViewScan Concealed Weapons Detection System

### APPLICATIONS

Correctional Facilities	Courthouses
Special Events	Sports Venues
Schools	Transportation Terminals
Office Buildings	Nuclear Facilities
Any facility looking to increase safety and security	

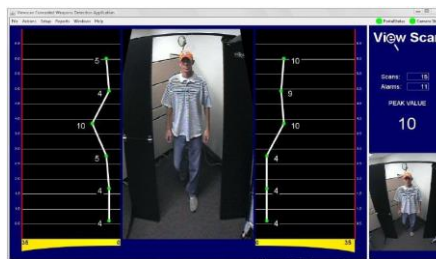
### FEATURES

- Locates and Visually Indicates Threat Objects
- Adjustable Audible Alarm
- Reduces False Alarms
- Faster Throughput than Conventional Metal Detectors
- Safe for Medical Devices such as Pacemakers
- Easily Movable
- Easy to use Intuitive Graphical User Interface (GUI)
- Image and Data Archiving
- Optional 4-Hour Battery (sold separately)
- Quickly Prints Evidence (printer sold separately)
- Seamlessly Integrates with View's Positive ID Management System (Sold Separately)
- Weighs only 56 lbs (75lbs shipping weight)
- Camera can be mounted to unit as shown (instead of a separate camera which must be installed across from the unit on the walls of the facility)



**ViewScan** is the most technologically advanced walk-through Concealed Weapons Detection System (CWD). It's easy-to-use, PC-based software displays and tacks persons who are carrying threat objects, greatly simplifying the process of discriminating suspicious items from harmless ones. Its highly sensitive, completely passive sensor technology accurately detects the location and number of threat objects such as knives, guns and razor blades. Simultaneously, it ignores personal artifacts like coins, keys and belt buckles. The graphical user interface (GUI) displays an object's location on the image of the scanned person (see screen shots to the right). ViewScan does not interfere with any medical devices including pacemakers and is safe for pregnant women.

### Screen Shots:



### Audible Alarm: "Warning"



The ViewScan has been designated by the U.S Department of Homeland Security as a Qualified Anti-Terrorism Technology (QATT).



Visit us online at [www.viewsystems.com](http://www.viewsystems.com)

## SPECIFICATIONS

### Portal

Powder-coated aluminum monoliths (2)  
Portal Shipping Weight: Approximately 75 lbs  
(with optional case) Approx. 56 lbs without.  
Laptop Shipping Weight: Approximately 10 lbs  
83”H x 63”W  
32” Walkthrough space between monoliths  
Feet are 20”

### Workstation

Notebook Computer  
CD Rom Burner  
Network and Printer Ports OEM Windows® OS

### Video

Digital / USB Input

### Electrical

Power: 110/220 VAC; 3.5 Amps

### Environmental

Operating Temp: 40° - 105°F (5° - 40° C)  
Storage Temp: 32° - 140°F (0° - 60° C)  
Humidity: 5% - 95% RH (non-condensing)

### Communications

LAN 10/100 Base-T Ethernet

### Compliance

FAA Detection Specifications  
CE Mark ADA Compliant Low Voltage

### Safety

No electromagnetic emissions  
No interference with medical implants  
Safe for pregnant women

ViewSystems, Inc.  
6526 Point View Road,  
Benton, AR 72019  
TEL:(866) VIEW-SYS | (501) 303-6595  
info@viewsystems.com

### Archiving Capability

Every person passing through the portal is scanned and archived with the following data:

- Snapshot Image of Person
- Date and Time
- Threshold Settings
- Sensor Readings
- Graphical Display

Archiving can be controlled at the workstation. Flexibility exists to monitor anyone entering or leaving a building including after hours. This feature is useful for personnel and property protection as well as evidence collection and criminal prosecution.

For image-sensitive areas or cultures, the ‘live’ image can be replaced. In this case, threat objects will be indicated by red dots over a generic human caricature.

### Sensing Technology

ViewScan uses advanced magnetic sensors with on-board digital signal processing. The sensors communicate with patented software that spatially locates threat objects. ViewScan discriminates threat objects from non-threat objects by measuring the differences in total metallic mass and ferromagnetic composition. When a threat object or multiple threat objects are discovered, a red dot is superimposed over a real-time ‘snap-shot’ image of the person walking through the portal. A graphical display of the sensor data automatically scales the signal strength of individual sensors and cross-references them to the video image. ViewScan is the most technologically advanced walk-through concealed weapons detection system, using the safest detection technology and eliminating electromagnetic radiation (EMI/RF) exposure to portal operators and to the general public.

ViewScan’s threshold or sensitivity/selectivity settings are linear as opposed to segments or ranges that screen specific targets. The portal operator has access to specific threshold setting accessible at the control console. Threshold settings can be changed without interrupting traffic flow while effectively detecting threat objects (guns, knives, box cutters, razor blades, etc.) Non-threat objects (keys, coins, jewelry, belt buckles, etc.) are permitted to pass without creating false alarms. An advantage of ViewScan over conventional metal detectors is its ability to locate objects hidden in and on the body, as well as its ability to locate threat objects which have been covered or masked with materials such as aluminum foil, lead and plastic.

